

FALL 2020

BACK TO SCHOOL



Saint
Ambrose
of Woodbury

Thank you parents, for your partnership. We appreciate your patience, your support and your prayers. In this document, we provide further details for reopening school. Please know that we will evaluate these practices at the end of September and make adjustments as needed.

Saint Ambrose, Pray for us!



Opening Day

August 27th - Back to School Day by
Sign-up Genius Appointments.

(coming soon!)

August 31st - First day of school

Arrival : 9:00 - 9:20

Busing information to follow

Go directly to classrooms

*Students arriving before this time
should remain in their vehicle.

Parents and guests will be asked to
remain outside during arrival and

dismissal times. Please plan to take

first day pictures at home or
outside of the building.



Arrival and Dismissal

Everyone will hand sanitize upon entering the school (Wash hands with soap and water in rooms that have sink access).

More information will be provided once the district decides on busing.





The Classroom Experience

Classroom arrangements have been altered to allow more distancing between students.

While we have visual reminders to promote social distancing in classrooms, hallways, lunchrooms, and churches we will not characterize the classroom setting as having 6ft of social distancing between students. The classroom design will be left to individual teacher discretion.

Shared Supplies

Any supplies needed that are not on the personal supply list will be provided by the teacher and assigned to individual students for their use. In the event that a supply/tool must be shared between students, either those items will be disinfected after use and before being given to another student; or, the student(s) will sanitize their hands prior to and after using a shared item.

Chromebooks

We will be sharing the school owned devices we have and sanitizing between students.



Utilizing Outdoor Space

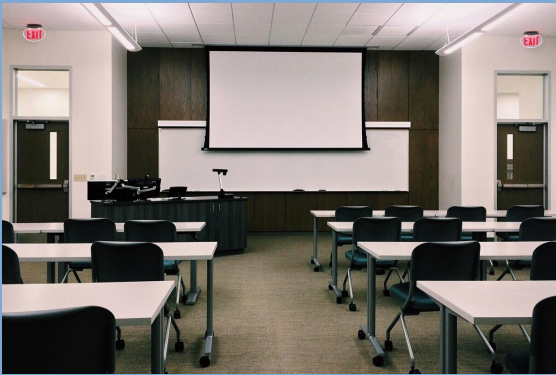
Each teacher will have a set space to use to teach outside.

Students may take a break from wearing a mask outside if able to distance safely.

Time spent in outdoor space will be determined by individual teachers and classroom needs.

K-2

Tables will be spaced out as much as possible in the classroom.



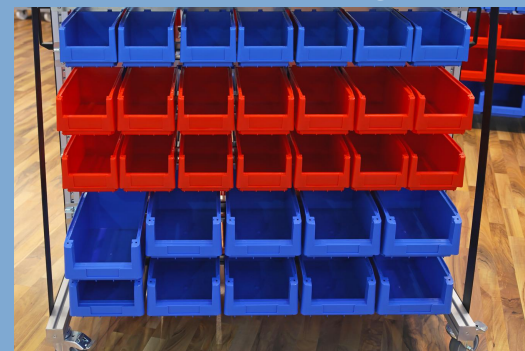
Lockers/Cubbies - Use of cubbies and lockers will be at staggered times throughout arrival and dismissal times. Teachers will implement an individualized plan for their classroom to meet this need.



Carpet Space - Teachers will use their discretion and a combination of carpet space and tables during direct instruction. As much space as possible will be allotted between students when on the carpet.



Games/STEM Bins/Free Choice - Students will sanitize their hands prior to using any free choice equipment in the classroom. Equipment will be sanitized at the end of the day. Should students move from equipment-to-equipment, they will be required to sanitize their hands during transition.



3-5

Tables - Tables will be spaced out as much as possible in the classroom. Flexible seating will be utilized where available, as well as distanced carpet spaces for instructional time.



Lockers- Students will use lockers provided in the classroom. Use of lockers will be at staggered times throughout arrival and dismissal times, so that neighboring lockers are not being visited at the same time. Teachers will also provide ways for students to store books and materials at desk spaces to minimize the need for locker visits during the day. Teachers will implement an individualized plan for their classroom to meet this need.



Carpet Space - Teachers will use their discretion and a combination of carpet space and tables during direct instruction. As much space as possible will be allotted between students when on the carpet.

6-8



Tables - Tables will be spaced out as much as possible in the classroom. Flexible seating and extra tables will be utilized where available to create more workspaces in the classroom.

Lockers - to start the school year, we do not plan to use lockers. Students will need a backpack to carry their supplies. We will adjust this practice as needed once coats are required.

The 6-8 Schedule is not yet complete. Planning with fewer transitions while prioritizing academic placement is the focus. We will communicate with 6-8th grade families as soon as the schedule is complete.

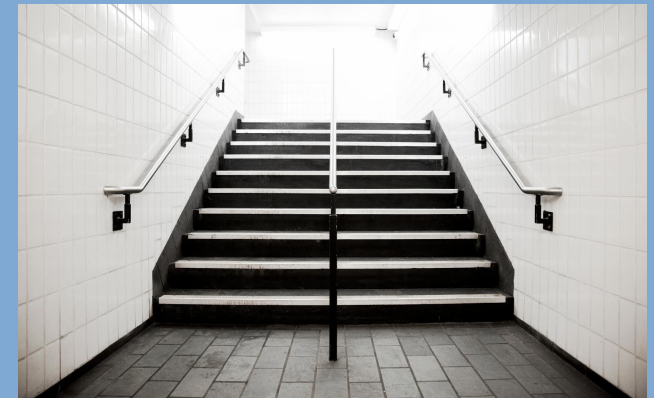
Specialists

K-5

Students will attend specialist classes outside, in the specialists room and/or have specialists come to their classrooms on a rotating schedule. Classrooms will be cleaned between class visits.



**To avoid congestion in the hallways:
K-2 students will always go upstairs on the staircase in the K-2 hallways and return using the main hall stairway.
3-5 students will go up and down the main hall stairway.**



6-8

Students will move to specialist classrooms and specialists will utilize outdoor space when appropriate.

Bathroom Procedures

Frequent hand washing and sanitizing will take place throughout the day. Anytime students enter the classroom they should repeat.

K-2: Kindergarten will use their classroom bathroom and sink as much as possible. First and Second grade will have an assigned bathroom time(s) during the day. Students will be allowed to use the bathroom at times other than their assigned time when needed.

3-5: Third through fifth grade will also have an assigned bathroom time(s) during the day. Students will be allowed to use the bathroom at times other than their assigned times when needed.

6-8: Socially distanced markings will be placed on the floor. Students will be expected to utilize these markings while waiting their turn. Students will need to leave during class using a pass to use the bathroom, the bathrooms will not be available during student passing times.



Drinking Fountains

Students are encouraged to bring their own water bottles and fill them at home before coming to school each day. The "fountain" function of each drinking fountain will be turned off but bottle fillers will be active.



Health Protocol

Parents should complete this short check each morning prior to sending their child(ren) to school. We also ask families to wash hands prior to leaving for school.

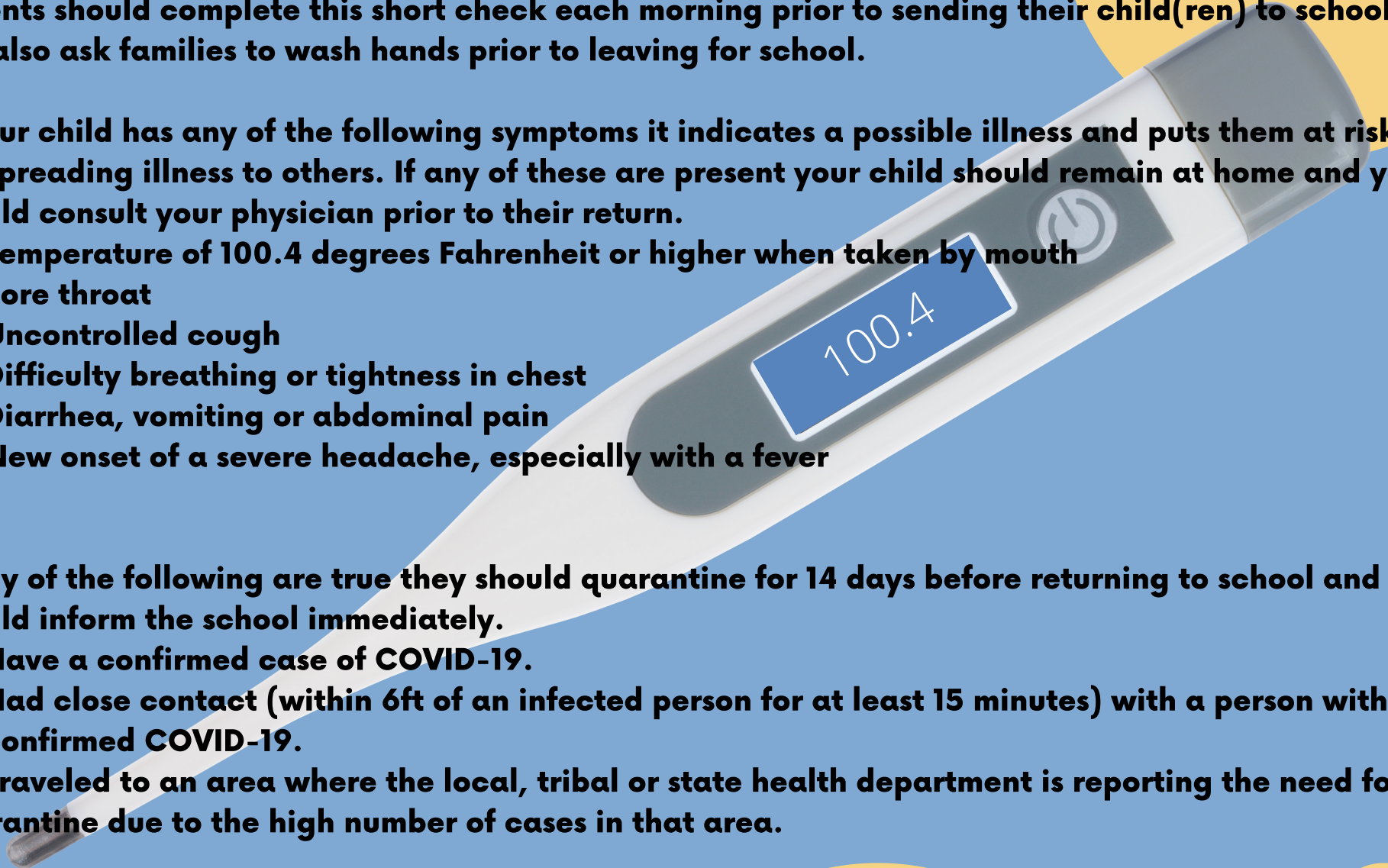
If your child has any of the following symptoms it indicates a possible illness and puts them at risk for spreading illness to others. If any of these are present your child should remain at home and you should consult your physician prior to their return.

- Temperature of 100.4 degrees Fahrenheit or higher when taken by mouth
- Sore throat
- Uncontrolled cough
- Difficulty breathing or tightness in chest
- Diarrhea, vomiting or abdominal pain
- New onset of a severe headache, especially with a fever

If any of the following are true they should quarantine for 14 days before returning to school and should inform the school immediately.

- Have a confirmed case of COVID-19.
- Had close contact (within 6ft of an infected person for at least 15 minutes) with a person with confirmed COVID-19.
- Traveled to an area where the local, tribal or state health department is reporting the need for quarantine due to the high number of cases in that area.

Thanks for partnering with us to mitigate risk at Saint Ambrose.

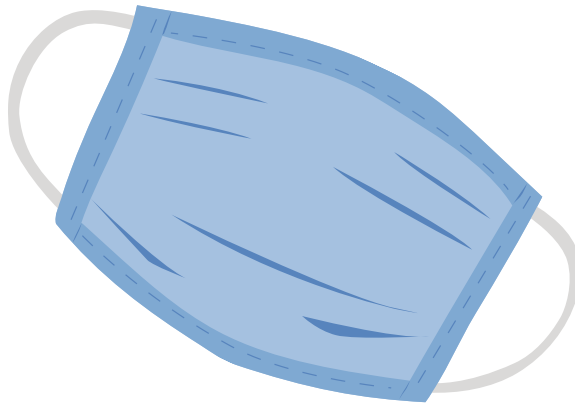


Face Coverings

We are planning to enforce the mask requirement. If there are issues we will provide masks and give cheerful reminders. We will make it as human and kind as possible, but we need to uphold the requirement. We are excited to see the students and wearing facemasks will allow us to be in person.

Face masks can be unique but school appropriate and should fully cover the nose and mouth. Shields and goggles are not suitable for this requirement at this time.

We suggest having a container, baggie or lanyard to safely store the mask for times it is able to be removed (lunch, recess, outside).



Cleaning Protocol

Our custodians have scheduled cleanings of bathrooms, the lunchroom and high touch surfaces.

Student tables will be disinfected between classes and exchanges of students in grades K-8. Desks/tables will be disinfected as needed throughout the day.

All classrooms will be cleaned and disinfected at the end of each day using electrostatic foggers for overall disinfection.

Parents, Guests and Visitors

We are limiting the number of people entering our building. All parents, guests and visitors should wear a mask and immediately check in with the office.

We will ask all guests to hand sanitizer and answer a health screening checklist.

All drop-offs and pick-ups will be done in the office. Creative options to engage parents sharing time and talents will be further explored.



Lunch

We will be eating lunch in our lunchroom, utilizing all of Fellowship Hall. Each table will be at 50% capacity - we will have 8 students per large table and 3 at the round tables. Students will be seated on both sides of the table with students from their class.

Tables will be cleaned between groups. Students will enter and exit from different sides of the room.



Recess

Grades K-5 will have recess each day, outside weather permitting. Each classroom will have a bag of recess equipment, limiting the amount of sharing of these objects. These objects will be sanitized each night.

WORSHIP EXPERIENCE

**3-5 Mass
Tuesdays at 2:30**

**6-8 Mass
Thursdays at 2:30**



**K-2
Scheduled Faith Talks with
Father Peter and Father Ben in
the church.**

COMMUNICATION

How to communicate a case to the school:

Please call the school office and ask for Betsy Hand, if she is not available please ask for Dianna Helmberger or Bruce Whynott.

How we will communicate a positive case:

If someone in close contact with your child has a confirmed case we will email your family immediately and provide you with necessary information and protocols.

Information gathering and sharing

When notified of a confirmed case of COVID-19 involving staff or children we will share the following information with the MDH follow-up team:

Person's name and phone number, so that MDH can conduct the case investigation in a timely manner.

Date the person first developed symptoms. If they did not have symptoms, what date were they tested and why were they tested?

Date(s) the person last worked/attended the child care, school, or camp.

NOTE: MDH considers the person to be infectious beginning two days (48 hours) prior to symptoms developing, or starting on the date of the test without symptoms through 10 days

Look for weekly updates regarding our procedures and protocols related to COVID in our Smore Friday newsnotes. Be sure your Sycamore information is current to receive emails. We will use our alert communication system to text & call parents if we need to implement a school shut down quickly.



HOW YOU CAN HELP

Talk to your child about how school will look a little differently and discuss any questions they have.

- How to handle and properly wear a mask
- Hand washing and hand sanitizing
- Social distancing/spacing
- Coughing and sneezing etiquette
- Not sharing personal items



Continue to read through all school communications as more information and details become available.

- Please keep your child home if they are not feeling well. Check the MHD decision tree to determine when your child should return to school
<https://www.health.state.mn.us/diseases/coronavirus/schools/exguide.pdf>
- At this time students would be able to move to distance learning while they recover.
- Send a container/baggie with an extra mask with your child in case their other one needs to be replaced.
- Have a back up plan ready for your child should your child/family need to move to distance learning.

Please reach out with any questions or concerns, we are here to help.

****This plan is subject to change based on new best practices and new research as it becomes available. Any updated plans will be sent out to families in the weekly newsletter from the school office.**